



**RAYONEX**<sup>®</sup>  
FOUNDATION

# RAYONEX *feedback*

THE MAGAZINE ON **BIORESONANCE ACCORDING TO PAUL SCHMIDT**<sup>®</sup>



The transformation of Bioresonance devices according to Paul Schmidt

Autism spectrum disorders

No limits on the road – the roadshow is rolling!

**05**  
10.2025

---

Important information: Please note that the information, advice and solutions offered here are based on over 40 years of experience. However, it is important to note that this advice is not a substitute for a consultation with a naturopath or a doctor practising naturopathy. Furthermore, we would like to emphasise here and in the following pages that the conventional medical community has yet to accept or acknowledge the effects of bioenergetic oscillations, despite the existence of a double-blind randomised, placebo-controlled, prospective clinical study.

---

Editor's note: The editors reserve the right to shorten and adapt the language of incoming texts.

# EDITORIAL

## Global risks, new perspectives, and international projects – Looking to the future with Bioresonance according to Paul Schmidt

Dear Rayonex feedback readers, you were surely surprised too: On 28<sup>th</sup> April 2025, Europe, or more precisely Spain and parts of the neighbouring Portugal, experienced a blackout, i. e. a large-scale power failure that affected millions of people for almost 24 hours.



**Dietmar Heimes**  
Chairman of  
Rayonex® Foundation

Another scenario: During his many lectures in Japan, Mr Norose (Rayonex partner and boardmember of the Rayonex®

Foundation) repeatedly told us about the potential risk of a tsunami or a major earthquake in Japan. Mr Norose was always particularly concerned when the regular, smaller earthquakes failed to occur, tectonic tensions built up and the risk of a larger earthquake increased.

If you take a look at the website <https://www.volcanodiscovery.com/de/ort/11783/erdbeben/saka.html>, you can see how frequently – almost hourly – earthquakes are measured on the Japanese island.

We were left wondering when Mr Norose asked us to consider a Bioresonance device according to Paul Schmidt, which works without a power connection or battery and could therefore also help in the event of a disaster. What do you think? Would you also see such a device as a necessary and useful extension of Bioresonance according to Paul Schmidt? Please feel free to write to us at [International@rayonex-foundation.de](mailto:International@rayonex-foundation.de).

Let us stay with the Bioresonance devices according to Paul Schmidt for a moment. The editorial article in this

issue is extremely forward-looking, dealing with the development and transformation of the Rayocomp PS 10 and the Rayocomp PS 1000 polar 4.0 over several years to comply with the MDR (Medical Device Regulation). This has already laid a strong foundation for the national and international application of Bioresonance according to Paul Schmidt in the future.

A matter close to our hearts: As you know, the Rayonex® Foundation is particularly involved in the field of autism spectrum disorders. You will find references to this in some of the articles in this issue, as the projects we are supporting have already started and it is a great pleasure to see the enormous (international) help this has brought to the children. We would therefore like to express our sincere thanks to you, the Supporters of the Rayonex® Foundation. Without you, the projects could not be initiated and the children and parents would not receive any help.

*Thank you!*

We hope you enjoy reading this Rayonex feedback, all the best, stay healthy and full of good thoughts and deeds!

Warm regards, 

# CONTENTS

5

## **Editorial**

The transformation of Bioresonance devices according to Paul Schmidt

8

## **Human medicine**

Autism spectrum disorders

Twins with autism spectrum disorder

13

## **Rayonex internal**

Technology with depth

16

## **Rayonex international**

Bringing Rayonex to Hong Kong

No limits on the road –  
the roadshow is rolling!

And the journey continues ...

21

## **Rayonex® Foundation**

Registration form Rayonex® Foundation

23

## **Veterinary medicine**

Rayonex at the 3<sup>rd</sup> Congress for  
Integrative Veterinary Medicine

Treatment of eosinophilic  
granuloma complex in cats

26

## **Human medicine**

Bioresonance according to  
Paul Schmidt in dentistry

RAH analysis: Energetic markers  
instead of literal findings

29

## **Prominent Figures in Bioresonance according to Paul Schmidt**

Gustav-Adolf Hussmann

32

## **Good to know**

Hangover? Energetic balance  
and gentle detoxification

34

## **A wild success**

We are looking for: The best pictures  
of your pet during treatment!

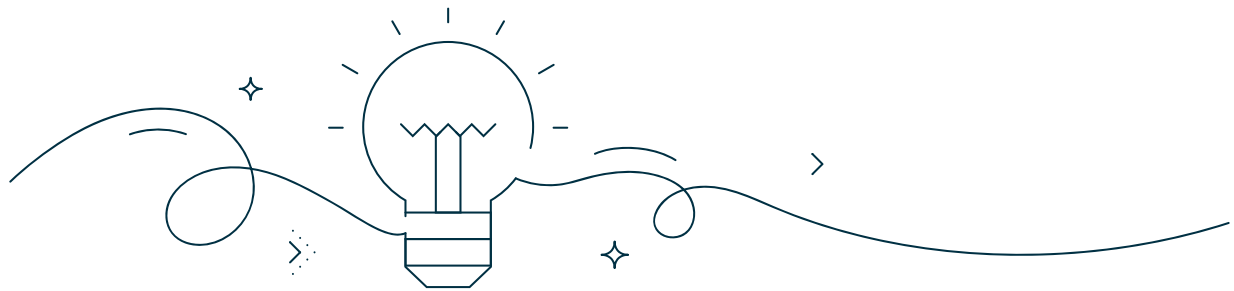
35

## **Outlook**

Preview of the next issue

# THE TRANSFORMATION OF BIORESONANCE DEVICES ACCORDING TO PAUL SCHMIDT

Upgrade, Remodelling, future: Rayocomp PS 10 plus and PS 1000 polar 4.0 (2025)



As you hold this issue in your hands or read it online, Bioresonance according to Paul Schmidt has made an almost unbelievable developmental leap forward. You have probably wondered recently why no further developed RAH programs or additional treatment options have been offered for Rayonex Biomedical's Rayocomp devices. This article explains the path that the development of Bioresonance devices according to Paul Schmidt had to take in order to ultimately achieve one goal: Securing the future of Bioresonance according to Paul Schmidt.

Just two years ago, the development team as well as national and international therapists contributed new RAH programs, which were then programmed and transferred to the Rayocomp PS 10 and Rayocomp PS 1000 polar 4.0 via software updates, making them available for use. This had been the procedure since 2007, the year in which the RAH Human was launched, and 2011, the year in which the RAH VET was launched. A powerful RAH expert system with over 3,600 RAH programs, Test Protocols and Compact Programs was created.



**RAH program:** A compilation of many individual fundamental frequency values that can be used not individually but as a whole for energetic analysis and therapy.

**Test Protocol:** Pre-designed compilation of RAH programs that should ideally be tested during the energetic analysis of a symptom pattern, thus forming the basis for subsequent energetic therapy (harmonisation). Test Protocols are particularly helpful for beginners in analysing the respective symptom pattern, taking into account all essential regulatory relationships.

**Compact Program:** Pre-designed set of RAH programs that can be used for direct energetic harmonisation of a symptom pattern if testing is not possible.

In 2023, it became clear that due to the limited program memory of the Rayocomp PS 10, no further RAH programs could be integrated into the device. This had far-reaching consequences not only for the Rayocomp PS 10 itself, but also for the Rayocomp PS 1000 polar 4.0. This is because the Rayocomp PS 10 and the Rayocomp PS 1000 polar 4.0 only work perfectly together if both devices are able to set all RAH programs. Imagine if all new RAH programs had been updated and integrated into the Rayocomp PS 1000 polar 4.0, but not into the Rayocomp PS 10. Then it would not have been possible to test the RAH programs in the Rayocomp PS 1000 polar 4.0, save them on a Green-Card and use them for therapy on a Rayocomp PS 10, as the latter would not have integrated the new RAH programs.

This created a unique situation in which many new RAH programs were created since 2023 but could not be updated.

Added to this was the challenge that the Rayocomp PS 1000 polar 4.0 med. and the Rayocomp PS 10 med. had to be redesigned, as both devices will have to meet the much stricter medical device requirements of the upcoming MDR (Medical Device Regulation). However, as all non-medical devices are technically identical to the medical devices and therefore all devices were affected, a master plan had to be developed for both devices.

This master plan made it necessary to completely redesign the Rayocomp PS 1000 polar 4.0, i. e. new electronics, new display, new touchscreen, new internal data communication, new operating system, new database, etc. All these innovations had to be considered in the context of the MDD (Medical Device Directive), which is valid until 2028, and the MDR, which will then come into force.

The same applied to the Rayocomp PS 10. Here, the need for a larger memory – in order to integrate the new RAH programs – posed an even greater challenge. In this context, it is now understandable why Rayonex

Biomedical needed almost two years not only to redesign both devices, but also to have the new designs successfully tested in laboratories in accordance with the new and much more difficult MDR regulations. Two years in which Rayonex Biomedical was unable to supply users with new RAH programs or integrate new treatment options. The entire development team, especially the hardware and software development departments, was busy with this until the end of March 2025.

Both devices, the new Rayocomp PS 10 plus and the new Rayocomp PS 1000 polar 4.0 in the 2025 version, have already passed all the necessary tests for the new MDR and are therefore MDR-ready – an important prerequisite for the granting of the MDR certificate, which will be required after the current MDD certificate expires in 2028.

Today, Rayonex Biomedical is better positioned than ever before in the market with its two newly developed devices, the Rayocomp PS 10 plus and the Rayocomp PS 1000 polar 4.0 in the 2025 version. The many RAH programs developed in the meantime are available in the two new devices and also in all Rayocomp PS 10 basic devices.

Users can now invest in the new Rayocomp PS 10 plus or the new Rayocomp PS 1000 polar 4.0 (version 2025) with confidence, as these devices will represent Rayonex Biomedical's new device platform for many years to come. The experience gained with the two new devices since March 2025 has been fantastic. Due to high demand, only about half of all pre-orders have been delivered to date.

## What options do users with existing devices have for switching to the new devices?

---

### HERE ARE THE UPGRADE AND REMODELLING OPTIONS FOR EACH DEVICE CLASS:

---

#### Rayocomp PS 10

If you have a Rayocomp PS 10 with a flip switch on the back, you can have the device upgraded. You return your old Rayocomp PS 10 (with flip switch) and receive a brand new Rayocomp PS 10 plus for the price of the base unit. The modules from your old Rayocomp PS 10 will be transferred to the new Rayocomp PS 10 plus free of charge.

If you have a Rayocomp PS 10 with a push button on the rear panel, you can either upgrade the device or have it remodelled to the new Rayocomp PS 10 plus for a remodelling fee.

Whether you choose an Upgrade or a Remodelling, you will immediately have full access to all RAH programs – including the new ones! And, of course, you will also enjoy all the other advantages of the new Rayocomp PS 10 plus (large memory, super-fast RAH, large battery, internet update capability, etc.).

**Note:** You will receive a two-year device warranty for both an Upgrade and Remodelling of your Rayocomp PS 10.

Please note that older Rayocomp PS 10 devices cannot be updated with new RAH programs due to insufficient program memory. Since March 2025, this has only been possible with the new Rayocomp PS 10 plus.

#### Rayocomp PS 1000 polar

The serial number of your Rayocomp PS 1000 polar determines how you can convert your old Rayocomp PS 1000 polar into a new Rayocomp PS 1000 polar 4.0 (2025). If the serial number of your Rayocomp PS 1000 polar is below 3000, an Upgrade will be offered. This works in exactly the same way as for the Rayocomp PS 10. You return your old Rayocomp PS 1000 polar and receive a brand new Rayocomp PS 1000 polar 4.0 (2025) in exchange for the cost of the base unit. The modules from your old PS 1000 polar will be transferred to the new Rayocomp PS 1000 polar 4.0 (2025) free of charge.

If you have an old Rayocomp PS 1000 polar 4.0 with a serial number higher than or equal to 3000, you can have the device remodelled to the new Rayocomp PS 1000 polar 4.0 (2025) for a remodelling fee.

Here too, you will have immediate full access to all RAH programs – including the new ones! And, of course, you also benefit from all the other advantages of the new Rayocomp PS 1000 polar 4.0 (2025), e. g. a new, super-fast display, new colour design, MDR ready, new database, new client history, even more precise dipole antenna system, and more.

**Note:** You will receive a two-year device warranty for both an upgrade and a remodelling of your Rayocomp PS 1000 polar.

With all these innovations, the transformation of the old Rayocomp PS 10 and Rayocomp PS 1000 polar 4.0 devices has been successfully implemented, thus securing the future of Bioresonance according to Paul Schmidt.

If you have any questions about an Upgrade or Remodelling, please contact your regional representative.

(Text: Dietmar Heimes)

# AUTISM SPECTRUM DISORDERS

Causes and ways to help



Autism spectrum disorders (ASD) are complex and affect people in very different ways. While some show clear developmental delays in early childhood, others may be highly intelligent but face social challenges throughout their lives, as is the case with Asperger syndrome. What all those affected have in common is that they perceive the world in their own unique way, which can lead to special strengths but also to considerable stress.<sup>1</sup>

The causes of autism spectrum disorders are as complex as the disorder itself: Genetics, spontaneous mutations and environmental factors all play a role in the development of autism. While some people have a genetic predisposition, studies show that environmental factors – such as air pollution, toxins and prenatal influences – can further increase the risk. During pregnancy in particular, the body appears to be sensitive to external stresses, which can have a long-term impact

on the child's neurological development. But what happens when autism has already manifested itself? This is where the question of support and quality of life comes into play.

### **Bioresonance according to Paul Schmidt – A complementary approach to support autism**

Bioresonance according to Paul Schmidt (BaPS) is not a promise of healing, but a way to support the body energetically. Therapists worldwide report positive effects, especially in early childhood autism: Children become calmer, less aggressive and make more contact with their environment and their parents. The method helps to optimise metabolic processes, promote detoxification and improve overall energy intake – processes that often do not function optimally in autism.

But people with Asperger syndrome can also benefit from this support. Although they do not usually have cognitive impairments, everyday life often takes an enormous toll on them. Adapting to social norms, coping with social interactions and constant sensory overload lead to chronic exhaustion in many people. Bioresonance according to Paul Schmidt could help provide the energy needed to better cope with these stresses.

### **Improvement instead of change – A holistic view of ASD**

Autism is not a disease that needs to be 'cured', but rather a different way of perceiving the world. The challenge lies in recognising the individual needs of those affected and finding ways to improve their quality of life. Bioresonance according to Paul Schmidt can be an important building block – not as a sole solution, but as complementary support that helps people feel more stable, energetic and balanced.

Whether early childhood autism or Asperger syndrome, the goal remains the same: Not change, but re-

lieve. And this is exactly where Bioresonance according to Paul Schmidt comes in, providing gentle support without overwhelming. In a world that often takes little account of neurodiverse people, this can be a decisive step towards a life with more energy, more balance and more connection to the environment.

### **New approach to supporting autism patients – A global project by the Rayonex® Foundation**

As one of the first projects of the Rayonex® Foundation our goal is to support patients with autism spectrum disorders worldwide. In close cooperation with dedicated therapists in the Netherlands, we have begun to analyse and energetically classify initial patient data.

Particularly striking in the initial scans of patients with early childhood autism were energetic stresses on the nervous system, followed by stresses on the immune system, the intestines and building biology.

### **What does science say about this?**

More and more studies show that the microbiome, i.e. the gut flora, could play an important role in autism spectrum disorders. Abnormalities in the composition of gut bacteria are suspected of influencing the immune system, nerve function and even behaviour.

Autism patients frequently exhibit dysbiosis, an imbalance in the intestinal flora that can be accompanied by digestive problems, inflammation and impaired neurotransmitter production. Targeted support for the microbiome could therefore be a promising approach to improving symptoms. <sup>2</sup>

There is also evidence that the immune system plays a role in the development and progression of autism spectrum disorders. An interesting research approach is investigating the role of microglia cells, the immune cells of the brain. Using organoids, miniature versions of brain cell networks, scientists have observed chang-

es that occur in certain forms of autism spectrum disorders. These studies offer new insights into the development of the brain and its immune system.<sup>3</sup>

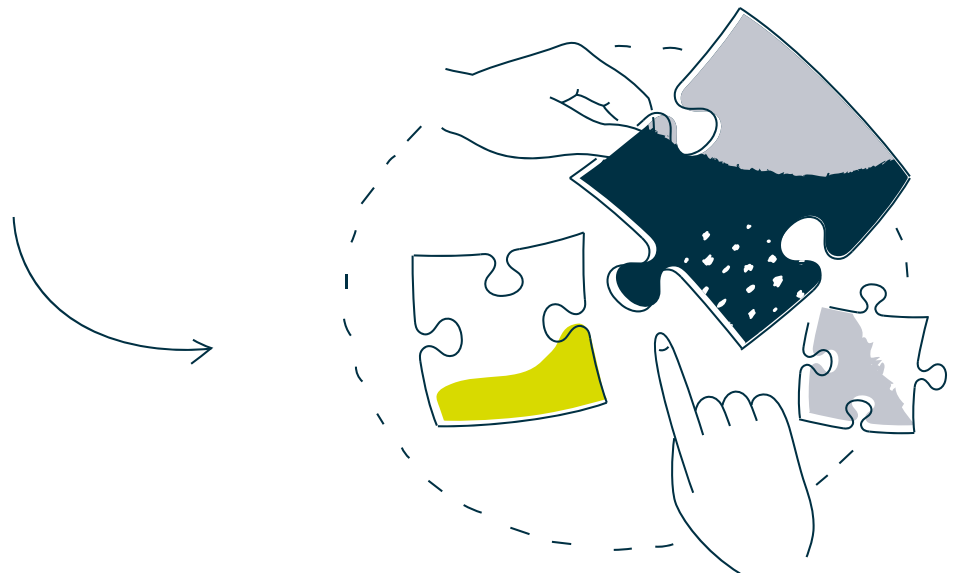
However, it is important to emphasise that the exact mechanisms linking the immune system to autism spectrum disorders are not yet fully understood. Further research is needed to unravel these complex relationships. The Rayonex® Foundation is currently focusing on identifying common patterns across a large number of patients. These findings will later be incorporated into targeted therapy recommendations.

We currently lack access to patients with Asperger syndrome who are interested in trying out our energetic support. I would be delighted if therapists, patients

or affected individuals feel inspired by this report and contact me directly by email at [g.bunkenburg@rayonex-foundation.de](mailto:g.bunkenburg@rayonex-foundation.de).

Your interest and support mean a lot to us. Together, we can gain valuable insights and pave new ways for targeted support. I look forward to hearing from you and exchanging ideas!

More details on the initial results and possible therapeutic approaches will follow in our second report in the next issue. (Text: Gudrun Bunkenburg)



---

<sup>1</sup> Imbriani, Giovanni, Panico, Alessandra, Grassi, Tiziana et al.: Early-Life Exposure to Environmental Air Pollution and Autism Spectrum Disorder. A Review of Available Evidence. In: *Int J Environ Res Public Health* 18/3 (2021). URL: <https://pubmed.ncbi.nlm.nih.gov/33572907/> (Version: 18.02.2025).

<sup>2</sup> Wan, Yating, Zuo, Tao, Xu, Zhilu et al.: Underdevelopment of the gut microbiota and bacteria species as non-invasive markers of prediction in children with autism spectrum disorder. In: *Gut* 71 (2022). S.910-918. URL: <https://gut.bmj.com/content/71/5/910> (Stand: 18.02.2025). Macek, Boris: Haben Darmbakterien etwas mit Autismus zu tun? URL: <https://www.gesundheitsindustrie-bw.de/fachbeitrag/aktuell/haben-darmbakterien-etwas-mit-autismus-zu-tun> (Version: 18.02.2025). Neubauer, Johanna, Kaiser, Anna und Hohmann, Sarah: Darmmikrobiota und Autismus-Spektrum-Störungen. Ein Überblick zu Zusammenhängen und möglichen Implikationen für therapeutische Interventionen. In: *Zeitschrift für Kinder- und Jugendpsychiatrie und Psychotherapie* 52/3 (2024). S.151-165. URL: <https://econtent.hogrefe.com/doi/pdf/10.1024/1422-4917/a000962> (Version: 18.02.2025).

<sup>3</sup> Schäfer, Simon: Autismus verstehen durch Organoide. Neuer Blick auf Immunsystem des Gehirns. URL: <https://www.tum.de/aktuelles/alle-meldungen/pressemitteilungen/details/autismus-verstehen-durch-organoide> (Version: 18.02.2025).

---

# TWINS WITH AUTISM SPECTRUM DISORDER

## A practical report on linguistic and emotional progress in children on the autism spectrum

For several years, I have been treating two boys (twins) in my practice. They first came to me when they were two and a half years old. They were very restless and barely able to sit in the treatment chair for a few minutes. The brothers communicated loudly and with gestures, so that they were able to make themselves understood to each other and to their family members using this loud and sign language. They did not speak, but they understood everything that was said to them very well. The family responded to this type of communication, but also did a lot to encourage the children to speak. Within the following six months, one of the boys began to speak words and short sentences.

The mother always strove to provide her children with a balanced and healthy diet. Her openness and interest in Bioresonance according to Paul Schmidt made for a very pleasant working relationship. The boys often had colds, which meant we had to treat infections on a regular basis, but these always cleared up quickly.

At this point, I received an invitation to a specialist conference on autism spectrum disorders (ASD) organised by Rayonex Biomedical. This training course proved to be extremely enriching. Autism therapists from various countries who also worked with Bioresonance according to Paul Schmidt presented their treatment concepts and experiences. Particularly impressive was the contribution by Dr Harald Blomberg from Sweden, who shared his findings from decades

of work with ASD patients. He had developed nutrition and exercise programmes and spoke with great enthusiasm about the significant progress his treatments had made since he had integrated bioresonance.

A week after the conference, I asked the mother to come back to the practice with her twins. At that point, they were three years old. We tried out a very simple, short program that now included the Rayonex autism program, and after just three treatments, we noticed that the children were much calmer.

Harmonisierungsprotokoll B.Philipp Bioresonanz BS		Datum: 10.07.2025
<b>Personendaten:</b>		Personennr.: _-_-_-
Nachname:	_____	
Vorname:	_____	
Geburtsdatum:	__./__./____	Geschlecht: _____
Anschrift:	_____	
Bemerkungen:	_____	
<b>RAH-Harmonisierung</b>		
Folgende energetische Störungen wurden harmonisiert:		
Nr.	Harmonisierungszeit, Programmname und Beschreibung	
1	00:03 (std:min), 00.00 Analysevorbereitung	
2	00:03 (std:min), 01.20 Polaritätsausgleich	
3	00:03 (std:min), 01.30 Vorsteuerung	
4	00:03 (std:min), 02.17 Blasen-Meridian	
5	00:03 (std:min), 35.10 Steigerung der Abwehrleistung, Grundprogramm	
6	00:03 (std:min), 31.10 ATP-Produktion gesamt	
7	00:03 (std:min), 31.26 ATP-Produktion Nebenniere	
8	00:10 (std:min), 72.19 Autismus	
9	00:03 (std:min), 06.00 Säure-Basen-Haushalt gesamt	
10	00:03 (std:min), 31.69 Entgiftung Phosphate	
11	00:03 (std:min), 37.62 Entgiftung Impfschäden	
12	00:03 (std:min), 54.50 Vegetatives Nervensystem	
13	00:03 (std:min), 64.55 Nebennierenrinde	
14	00:03 (std:min), 35.10 Steigerung der Abwehrleistung, Grundprogramm	
15	00:03 (std:min), 22.67 Coxsackie-Virus B 1	
16	00:03 (std:min), 22.68 Coxsackie-Virus B 4	
17	00:03 (std:min), 31.50 Entgiftung Grundprogramm	
18	00:03 (std:min), 01.00 Vitalisierung gesamt	

I gave the family a Rayocomp PS 10 to take home so that they could let each child sleep on the Fabric Detector or 30 minutes every day.

After three weeks, there was a noticeable change: The twins were both speaking in words and sentences, were much calmer and were able to sit in the treatment chair for more than five minutes during testing in the practice. I no longer heard them communicating through sounds. Their vocabulary was quite extensive from the start, which was amazing, as they had previously spoken very little or not at all, merely absorbing what was said to them.

Based on their success so far, the family purchased a Rayocomp PS 10 and continued the treatments. They often use the simple program we had used at the beginning. However, the treatment was no longer carried out daily, but twice a week as agreed. The boys remained susceptible to infections for a little longer, but this was easier to manage with their own device.

The two boys now attend two different schools, where they are doing well.

After completing the bioresonance programs, one of the children received additional atlas treatment at an orthopaedic practice, which also brought about a significant improvement in relaxation and general development.

This is a wonderful treatment success, which the young family and I are very happy about. (Text: Bärbel Philipp)



**BÄRBEL PHILIPP**

.....



Bärbel Philipp is a naturopath and chemical engineer and has been running her own practice since 2007. Prior to that, she worked for many years as a lecturer in naturopathic subjects. A particular focus of her work is enzyme therapy, on which she regularly exchanges ideas with colleagues in Germany and abroad. In August 2022, she published her specialist book 'Praxis der Enzymtherapie' (ISBN: 978-3-96474-414-2), which provides in-depth insights into this effective form of therapy.

→ [www.bioresonanz-braunschweig.de](http://www.bioresonanz-braunschweig.de)

# TECHNOLOGY WITH DEPTH

Development for Bioresonance according to Paul Schmidt



f.l.t.r.: Oliver Henkel, Chiara Schulte, Maik Wickel, Ahmad Alhaj Jnaid, Fynn Heimes

Our development department is the technological backbone of Bioresonance according to Paul Schmidt – a method that has been consistently further developed for over four decades. What once began with mechanically adjustable dipole antennas has developed into a state-of-the-art, high-tech therapy system through targeted research, intensive practical experience and close discussions with users – made in Germany. Made in the Sauerland region. In the light-

filled rooms of our Manufactory in the heart of Lennestadt, devices such as the Rayocomp PS 10 and the Rayocomp PS 1000 polar 4.0 are now being produced, based on decades of experience and meeting the highest technological requirements. State-of-the-art electronics combined with the proven dipole antenna system enable precise, digitally controlled transmission of harmonising frequency spectra. This development takes energetic therapy to a whole new level.



The Rayonex Biomedical Manufactury – the headquarters of our development department.

Particularly worth mentioning is the integrable Rayoscan® module, which is used in both the human and veterinary fields. This is an ‘ECG module’ that makes Bioresonance according to Paul Schmidt objectifiable through an energetic analysis based on the heart rhythm. This combination of modern measurement technology and cause-oriented systematics is unique to Rayonex Biomedical and has its origins in our in-house development department, which we would like to introduce to you below.

Our development team is involved in every product from the initial design and prototyping phase through to market launch. Close coordination with production, quality management and technical service plays a crucial role here, because quality, safety and reliability are paramount in a sensitive medical-energetic environment.

Whether adapting to individual therapy requirements, further developing proven modules or documenting all safety-related processes, our product development combines creativity with precision,

enabling energetic therapy to be implemented at the highest level.

With a clear focus on medical relevance, therapeutic benefits and user-friendly handling, we develop products that are used internationally – currently in 47 countries worldwide, in practices, clinics and increasingly in the field of prevention.

The department is headed by **Maik Wickel**, who combines many years of experience in electronics development with a solid academic background. As a graduate electrical engineer with a background in communication electronics, he brings both a conceptual and practical perspective to the daily development work. His wide range of responsibilities includes project coordination, technical documentation in the medical field and monitoring essential EMC measurements.

**Oliver Henkel** is responsible for IT and network technology as well as software and hardware development for the Rayocomp PS 10 system. With his train-

ing as a certified technician and additional studies in programming, he combines systematic development work with practical application. EMC and ESD testing as well as meticulous documentation for quality assurance are also part of his daily routine.

**Chiara Schulte** develops software for medical and non-medical products, primarily in connection with the new Rayocomp PS 1000 polar 4.0. She completed a dual degree in electrical engineering, combining profound theoretical knowledge with valuable practical experience – a combination that proves its worth every day in her varied work. She supports technical documentation, advises the production department on commissioning and repairs, and accompanies external product tests – including error analysis and troubleshooting. Her profile is complemented by relevant further education, including in the field of electromagnetic compatibility and safety-related system technology.

**Ahmad Alhaj Jnaid** obtained his bachelor's degree in Biomedical and Health Sciences with a focus on Digital Medical Technology last year and is currently completing his master's degree in Medical Data Science. He combines his sound academic education with practical development work – an ideal foundation for implementing data-based medical technologies. The focus of his work is primarily on the development of new technologies. For example, he is currently working on a new accessory for the Rayocomp PS 10 with Extension Kit, which will once again enhance the Rayonex product portfolio.

The development department received further support in the summer of 2023 with the arrival of **Fynn Heimes** as a working student. He brings fresh perspectives and great commitment to his daily work and has already been involved in one of the most extensive projects to date: The development of the Extension Kit for our Rayocomp PS 10. In the process, he gained valuable experience in the areas of injection moulding, battery technology, temperature monitor-

ing and EMC-compliant design. He also regularly uses 3D printing in his work, for example to build customised fixtures for assembly and process optimisation. He is currently working on several projects at the same time, gaining increasingly deeper insights into the intricacies of component design. In addition, he recently developed a modular fixture for an industrial robot that makes the production process significantly more efficient. In the long term, he aims to take on the programming of such systems himself.



Last but not least, **Niels Bunkenburg** completes our development team. As a trained computer scientist, he assists in the selection and implementation of new software technologies and tools and contributes his expertise to the analysis of errors and maintenance of our system infrastructure. He is currently pursuing his doctorate at Christian-Albrechts-Universität in Kiel in a working group for programming languages and translator construction. (Text: Gudrun Bunkenburg | Claudia Brill)



Alex Woo partnered with Yim Ho to become a Rayonex sales partner in Hong Kong.



## BRINGING RAYONEX TO HONG KONG

From a vision to a holistic healthcare network

Back in 2014 our friend Yim Ho, a film director and renowned newspaper columnist passionate about health and healing, wanted to open a holistic health centre. He was tired of seeing family, friends and readers succumbing to lifelong medication that did not improve their physical or mental health. This coincided with our quest for more natural and effective care for my father-in-law, who was increasingly going in and out of hospitals.

Together we opened a small shop that sold supplements and wholesome grains and snacks (WeHealth), and a one-room therapy centre (Just Resonance). Thus began our journey towards discovering the secrets of a healthy life.

The journey very quickly took us to the company Rayonex Biomedical. There, Yim Ho received treatment with the Rayocomp PS 1000 polar and we learnt about the principles of Bioresonance according to Paul Schmidt. We also took a Mini-Rayonex with us.

On the journey back, Yim Ho suddenly said: **'I can feel it – the Mini-Rayonex gives a similar energy to the one I get from practising qigong!'** At that moment, we unanimously decided to use the name 'WE Energy Box', after our company name 'WeHealth'.

Although not everyone in Hong Kong practices qigong or can feel the energy of the Mini-Rayonex, there are



WeHealth business in Jordan, a residential area in Hong Kong.



enough people who can testify to its effects. Be it better sleep, more vitality or faster wound healing. Furthermore, customers reported that they could not only feel the energy of the Duplex, they also saw clear effects on their health and well-being.

When we first started giving bioresonance therapy, we had just one Rayocomp PS 1000 polar device and a single therapist. Ruth Ng, who remains our chief therapist and nutritional consultant today, and is by all counts the heart, soul and driving force behind our practice. With her wide expertise, intuitive touch, and gentle care, Ruth has earned the trust and loyalty of countless clients and friends.

Although Hong Kong boasts a highly efficient health-care system, residents have always been open to alternative and integrative therapies. While most people go for Western medicine when conditions are acute or need surgery, they turn to Traditional Chinese Medicine (TCM) when dealing with chronic issues. In this sense we can say the concept of complementary medicine is deeply ingrained in the local health culture.

This blended approach is why Rayonex Biomedical with its cause-oriented methodology has found a receptive audience from the very beginning. It stands out as a forward-thinking approach - one that harmonises the body's natural frequencies for lasting well-being.

Over the years, our client base has expanded, along with our collection of Rayonex devices. However, it was the COVID-19 pandemic that truly brought home the value of bioresonance as a self-care tool - one that could be used at home, even during lockdowns, with or without direct therapist support.

For a city as fast paced as Hong Kong, where stress, pollution, and electromagnetic radiation (EMF) are daily challenges, having 24/7 bioenergetic support is invaluable. Whether used for immune modulation, stress relief, or detoxification, these devices have become essential.



One of our many meetings with Rayonex visitors.

As more clients experienced benefits - and as clinical studies continued to validate the efficacy of Bioresonance according to Paul Schmidt - confidence in the therapy has only strengthened.

From humble beginnings to becoming a trusted name in bioresonance, our journey reflects Hong Kong's growing embrace of integrative health solutions. With a strong team leveraging on Rayonex Biomedical's cutting-edge technology and science-backed devices, we have become a resource centre for parents looking after their children, as well as for children looking after their parents.

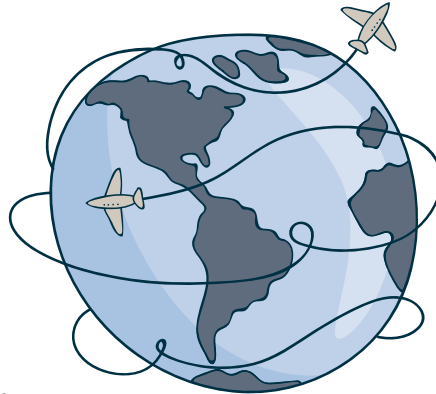
Our next goal is to broaden our support for Hong Kong's pet-owners, so that more and more animals can benefit from our approach of treating the causes before symptoms appear. (Text: Alex Woo)

# NO LIMITS ON THE ROAD – THE ROADSHOW IS ROLLING!

When someone goes on a journey ...

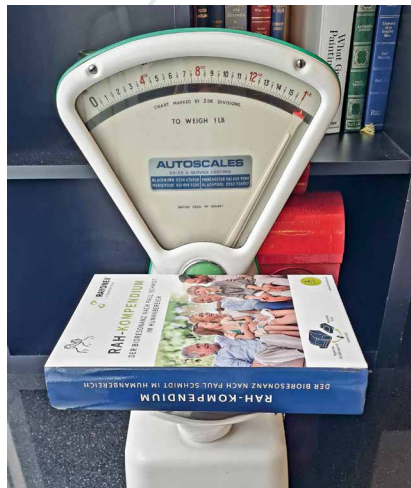
With the new Extension Kit, the sparkling Rayo®-Aqua series and fresh RAH updates in our luggage, we are setting off to share the latest developments across national borders.

Our international users show impressive commitment. Many travel to Lennestadt to take part in training courses, and we return the favour with visits in all directions. Especially within Europe, we feel that it was high time to be back on site in person. Everywhere we go, we encounter intelligent questions, exciting discussions and open ears. The exchange makes it clear that



good training is the key to successful application. Because only those who know the possibilities can make the most of them.

Of course, it is not only the flights that motivate us – sometimes it is the five-hour drive in the rain from Manchester to Heathrow (thank you, Paul!) or the warmest spring day in Vicenza with 20 degrees and the best espresso in the world. And there: Therapists who can immediately classify the new Extension Kit with a view to future analysis and harmonisation options – alert, interested and full of ideas.





In Japan – travelling between Tokyo and Osaka on the Shinkansen – we experience how deeply rooted Bioresonance according to Paul Schmidt is. Our long-standing users there are so experienced that they even test new software – precisely, enthusiastically and cooperatively.

In Hong Kong, we meet creative filmmaker Jim Ho, who is enthusiastic about the Rayo®-Aqua and jokingly asks if it can be used to turn water into vodka. And, of course, we meet an unshakeable dog patient who bravely survives the animal seminar!

In Morocco, we see how much strength can be generated when entire families are involved in the distribution, rewarded with an inspiring seminar at the Veterinary University in Rabat.

And the roadshow? It continues!

Many stops are still to come – but one thing remains the same: Enthusiastic users, genuine curiosity and excitement about every new innovation. A wonderful feeling for all of us. (Text: Gudrun Bunkenburg)



# AND THE JOURNEY CONTINUES ...

The International Roadshow goes online



After meeting numerous enthusiastic users in various countries, we are excited and very much looking forward to getting in touch with even more healthcare professionals and private users worldwide. Therefore, we are very happy to offer the latest news and developments in an online webinar – accessible for everybody around the world.

Sounds interesting? Fantastic! We are looking forward to ‘seeing’ you in the webinar. As we have numerous distributions and clients across the world and its time zones, we will offer this webinar twice. Please use the respective link or QR code to register yourself and receive the webinar link to access the event.

## Specifically, we will present the following:

- ✓ Development and implementation of the Extension Kit for the Rayocomp PS 10
- ✓ Changes and news on the new hardware version of the Rayocomp PS 1000 polar 4.0 – Upgrade and Remodelling
- ✓ Rayo®-Aqua product series
- ✓ Rayonex® Foundation and its first projects
- ✓ RAH updates



**08.11.2025 9:00 am (UTC+01:00)**

<https://rayo.link/rayonex-webinar-9am-fb>



**08.11.2025 4:00 pm (UTC+01:00)**

<https://rayo.link/rayonex-webinar-4pm-fb>

**Questions?** We look forward to connecting before or after the webinar with you. Please contact [support@rayonex.de](mailto:support@rayonex.de) and we can clarify any open questions easily and quickly.

Achieve more together -  
become a Supporter now!



**RAYONEX**<sup>®</sup>  
FOUNDATION

## REGISTRATION FORM

The Rayonex<sup>®</sup> Foundation pursues the goal of intergenerational promotion of Bioresonance according to Paul Schmidt. The foundation aims to be a global ambassador for Bioresonance according to Paul Schmidt and to establish its findings in society through public relations work, in particular through publications, literature, studies, congresses, training and further education as well as through the promotion of science and research and to promote its continuous research and development.

**You can sustain the work of the Rayonex<sup>®</sup> Foundation and enjoy the following benefits as a Supporter:**

- ✓ Discounted training and further education opportunities
- ✓ Free delivery of Rayonex feedback
- ✓ Participation in special campaigns
- ✓ Participation possibility in case studies of the Rayonex<sup>®</sup> Foundation
- ✓ Certificate

Hereby I

Title	
Surname, first name	
Profession	
Street	
ZIP-Code, city	
Country	
Telephone / mobile phone	
E-mail	
VAT ID	

apply to sponsor the Rayonex<sup>®</sup> Foundation and Bioresonance according to Paul Schmidt as a Supporter.

The annual Supporter contribution is to be paid by bank transfer to the invoicing company.

Please note that for the processing of the registration and the fulfilment of the benefits, the Rayonex<sup>®</sup> Foundation may be required to provide the given personal data to an authorised third party. By signing this form, I consent to the processing of my data by an authorised third party.

**Send by post to:**

Rayonex<sup>®</sup> Foundation  
Sauerland-Pyramiden 1  
57368 Lennestadt  
Germany

**Or by e-mail to:**

international  
@rayonex-foundation.de

**Supporter contribution:**

The Supporter contribution is currently € 63,87 (net, excl. VAT) per year.

The annual subscription is always due on Paul Schmidt's birthday on 31.10.

You can terminate your support on 1 October each year.

By signing this form, I consent to the processing of my personal data by the Rayonex<sup>®</sup> Foundation and an authorised third party such as a local distributor (see back page).

\_\_\_\_\_  
Date

\_\_\_\_\_  
Place

\_\_\_\_\_  
Signature

## Information pursuant to Article 13 (1) and (2) GDPR due to the collection of personal data

In connection with your registration as a Supporter of the Rayonex<sup>®</sup> Foundation, personal data will be collected from you. Please note the following data protection information:

### 1. Details of the responsible person

Responsible for the data collection is:

Rayonex<sup>®</sup> Foundation Sauerland-Pyramiden 1

57368 Lennestadt

Germany

Phone: +49 2721 6006-70

E-mail: [info@rayonex-foundation.de](mailto:info@rayonex-foundation.de)

[www.rayonex-foundation.de](http://www.rayonex-foundation.de)

### 2. Details of the data protection officer

The contact details of the data protection officer are as follows:

Rayonex<sup>®</sup> Biomedical GmbH

Matthias Schulte

Sauerland-Pyramiden 1

57368 Lennestadt

Germany

Phone: +49 2721/6006-28

E-mail: [datenschutz@rayonex.de](mailto:datenschutz@rayonex.de)

### 3. Purpose(s) and legal basis of the processing

a) The personal data is processed for the purpose of implementing the Supporter relationship (e.g. invitation to meetings, collection of contributions, organisation of Supporter activities).

b) The processing of personal data is generally based on the need to fulfil a contract in accordance with Article 6(1)(b) GDPR. The contractual relationships are primarily the funding relationship within the foundation.

If personal data is collected without the processing being necessary for the fulfilment of the contract, the processing is based on consent in accordance with Article 6 (1) (a) in conjunction with Article 7 GDPR.

### 4. The data subject is entitled to the following rights under the conditions specified in the respective articles:

- the right to information in accordance with Article 15 GDPR,
- the right to rectification in accordance with Article 16 GDPR,
- the right to erasure in accordance with Article 17 GDPR,
- the right to restriction of processing in accordance with Article 18 GDPR,
- the right to data portability in accordance with Article 20 GDPR,
- the right to object in accordance with Article 21 GDPR,
- the right to lodge a complaint with a supervisory authority in accordance with Article 77 GDPR
- the right to withdraw consent at any time without affecting the lawfulness of processing based on consent before its withdrawal.

### 5. The source from which the personal data originates:

The personal data is generally collected as part of the registration as a Supporter of the Rayonex<sup>®</sup> Foundation.

# RAYONEX AT THE 3<sup>RD</sup> CONGRESS FOR INTEGRATIVE VETERINARY MEDICINE

A wide range of lectures and workshops in Hallein near Salzburg

On **24<sup>th</sup> and 25<sup>th</sup> May 2025**, Rayonex took part in the 3<sup>rd</sup> Congress for Integrative Veterinary Medicine in Hallein near Salzburg. The event offered a varied program of lectures and workshops on innovative, complementary and holistic therapeutic approaches in veterinary medicine. The focus was on both new scientific findings and proven naturopathic methods.



peutic practice. The focus was always on dialogue between veterinarians, therapists and practitioners. It became clear that the therapy options for animals today are as individual as they are diverse – from classic naturopathic treatments to modern frequency therapies and innovative forms of herbal remedies.

Dr Ina Walter, a vet-approved animal naturopath and nutritionist, talked about Bioresonance according to Paul Schmidt. She explained the basics, how it works, and the diagnostic and therapeutic uses of bioresonance, especially for cause-oriented treatment and harmonisation of energetic disturbances in animals.

Other topics covered at the congress included the use of colloids, treatment options for leishmaniasis, ozone therapy, medicinal plants in veterinary medicine, aromatherapy and classical homeopathy. Ms Ziegler presented the topic of strophanthin, which she has covered in detail in her own book. The atmosphere at the congress was extremely positive. Many stimulating discussions and collegial exchanges took place, impressively underscoring the diversity of integrative approaches. The event not only provided a comprehensive overview of current developments, but also offered numerous practical tips for everyday thera-

The central aim of the Association for Integrative Veterinary Medicine is to share knowledge about alternative healing methods and species-appropriate nutrition. The aim is to create a living community of veterinarians, animal healers, animal energetics practitioners and anyone interested in healthy nutrition for dogs, cats and horses. The non-profit Association for Integrative Veterinary Medicine is financed by donations, membership fees and income from events. (Text: Gina Alberts | Association for Integrative Veterinary Medicine)



# TREATMENT OF EOSINOPHILIC GRANULOMA COMPLEX IN CATS

A case report by Elisabeth Hirning

From my daily practice, I would now like to report on my experiences in treating eosinophilic granuloma complex (EGC) in cats with Bioresonance therapy according to Paul Schmidt. I have always been fascinated by cats with their sensitive and independent nature – which is why the well-being of Pepita, a four-year-old Maine Coon cat who was brought to me in January 2024, was particularly close to my heart.



Pepita had been suffering from eosinophilic granuloma complex (EGC) for some time, an inflammatory skin disease in cats in which certain immune cells (eosinophilic granulocytes) accumulate in the tissue. The symptoms of this disease are varied and range from skin redness, itching and hair loss to painless ulcers, including in the mouth. It is a complex of symptoms that can manifest in various forms, such as linear granulomas, plaques or ulcers. In Pepita's case, the disease mainly manifested itself as an ulcer on her tongue and a cracked lip. In addition, the administration of corti-

sone led to noticeable apathy – a known side effect of this medication. The main triggers are flea bites, food allergies and autoimmune processes; environmental factors and genetic predisposition can also play a role. Despite the extensive symptoms, diagnosis is often difficult and treatment is often lengthy, as many medications only have a symptomatic effect.

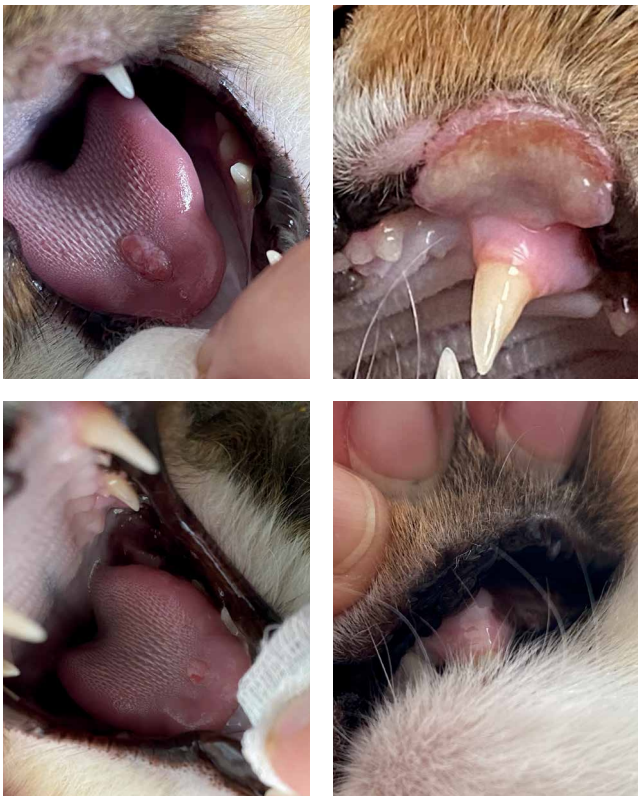
The usual cortisone therapy did not bring sufficient improvement, but caused side effects such as apathy. The owners rejected Januskinase inhibitors and instead sought a complementary naturopathic alternative. This is how they came to me with Pepita, and we began treatment with a Bioresonance analysis according to Paul Schmidt.

The results of the analysis using **RAH VET** showed the following energetic imbalances:

- 93.22 Flea saliva allergy
- 06.00 Acid-base balance complete
- 08.00 Harmful substances complete
- 07.40 Vitamins, water-soluble complete  
(dry food fed to date and turkey meat)
- 92.98 Stress

The RAH analysis protocol revealed energetic disturbances in the immune and lymphatic systems, among others, as well as in the acid-base balance; the previous diet was also not tolerated. The therapy therefore

began with detoxification, a change of diet and the regulation of the acid-base balance. A balanced acid-base ratio is particularly important because it helps the body to reduce inflammation and activate its natural defences, which is crucial for long-term recovery. To support the therapy, a Rayocomp PS 10 med. was used in home treatment to activate the body's self-healing powers and harmonise the disturbed frequencies. A Green-Card was created from RAH Human and VET and supplemented with the programs by Dr Elmar Ulrich (4.10 'aftercare' and 4.02 'stress').



The two upper images were taken in March 2024, the two lower images in November 2024.

The change in feed was a particular challenge, as Pepita was very sensitive to change. However, an adapted diet is crucial to relieve the immune system and reduce inflammation. The supplementary feed was also individually tailored. Despite Pepita's reluctance to cooperate, the owners implemented all measures with dedication and thus made an important contribution to the success of the therapy. To treat the lesions, weekly wound cleaning and homeopathic injections

were carried out, which led to a significant improvement. The cortisone treatment has now been completely discontinued. Only a small remnant of the ulcer on the tongue is still visible and the lip has not burst open again so far. The progress made so far gives both humans and animals cause for optimism.

Thus, through a cause-oriented approach based on Bioresonance according to Paul Schmidt, a review of her diet and targeted feed changes, as well as support from homeopathy and orthomolecular medicine, Pepita's immune system was regulated and her energetic balance stabilised. This led to a significant stabilisation of her health and, in some cases, complete healing of the EGC (ulcer on the lip). (Text: Elisabeth Hirning)



## ELISABETH HIRNING

.....

Elisabeth Hirning is an animal naturopath, nutritionist and certified Bioresonance therapist according to Paul Schmidt. After training as a health care nurse in 1997 and working in human medicine for many years, she turned her attention to holistic animal healing. Her training in Bioresonance according to Paul Schmidt had a particularly formative influence on her. She values this method for its cause-oriented approach and uses it specifically to promote the health and quality of life of her animal patients.

→ [www.tiergesundheits-harmonie.com](http://www.tiergesundheits-harmonie.com)

# BIORESONANCE ACCORDING TO PAUL SCHMIDT IN DENTISTRY

Energetic impulses for holistic treatment concepts

There is a growing rethink in dentistry: Holistic approaches are increasingly coming to the fore. This is because interference fields in the mouth and jaw area, caused for example by root-treated teeth, chronic inflammation or incompatible materials, can have a systemic effect on the entire organism. Bioresonance according to Paul Schmidt (BaPS) offers valuable com-

plementary medical support in this context and opens up new possibilities in diagnostics and therapy.

This method was known little in the field of dentistry for a long time until Rayonex Biomedical found an experienced and exclusive dental partner in First Class GmbH in 2023.

First Class GmbH, led by managing director Stefan Seidel, is a specialist consulting agency that has been supporting, advising and assisting dental practices in the introduction of holistic concepts for many years. The company's own very positive experiences with Bioresonance according to Paul Schmidt prompted it to join forces with Rayonex Biomedical to develop a concept for establishing this method in the dental sector in the long term.

The professional expertise and support for this is provided by Dr Andrea Wolf, a dentist who has had her own practice in Frankfurt am Main since 1997. She is certified in implantology, periodontology, orthodontics, CMD therapy and Bioresonance according to Paul Schmidt. In her holistically oriented practice, she uses the method in an integrative way and with great success.

In their experience, Bioresonance according to Paul Schmidt has proven particularly effective in:

- ✓ searching for interference fields and focal points
- ✓ testing material compatibility
- ✓ periodontal and endodontic inflammation
- ✓ accompanying therapy for CMD and bruxism
- ✓ detoxification after amalgam removal

According to Dr Andrea Wolf, this method very often shows rapid positive effects, especially in patients with chronic stress. These experiences motivate the dentist to continuously develop its use in everyday practice and thus open up new areas of application.

Interested dentists will find competent and dedicated contacts at First Class GmbH and Dr Wolf. They provide personal advice and regularly offer interesting and informative events on this topic.



Dr Wolf is part of the dedicated team at First Class GmbH.

---

## Conclusion

---

Bioresonance according to Paul Schmidt is increasingly establishing itself as an integral part of holistically oriented dental practices. It complements conventional medical diagnostics in a meaningful way, especially in cases of complex or therapy-resistant complaints, and contributes noticeably to the well-being of patients.

Perhaps you will meet the dedicated team at First Class GmbH or Dr Wolf at one of the upcoming trade fairs? You can look forward to inspiring discussions, new practical application examples and exciting perspectives – and secure another building block for the continued successful development of your practice.

(Text: Gudrun Bunkenburg | Stefan Seidel)

*Come visit us!*

### infotage FACHDENTAL

The most important trade fair for dentistry and dental technology in the region.

**07.11. - 08.11.2025** | Frankfurt, Germany



# RAH ANALYSIS: ENERGETIC MARKERS INSTEAD OF LITERAL FINDINGS

Why 'amniotic fluid' and 'colostrum' can also indicate hormonal, immunological and organic connections in the Rayoscan® results

In practice, terms such as 'amniotic fluid' or 'colostrum' sometimes appear in the priority list of physiological analyses, even for users who are neither pregnant nor breastfeeding.

---

## WHY DOES THIS HAPPEN?

---

The descriptions in the list of RAH programs refer to frequency spectra that we have developed based on several so-called fundamental frequency values. These fundamental frequency values are not always assigned to a single organ or condition, but often cover several functional systems.

### **RAH 66.35 Amniotic fluid**

Contains frequency components of the uterus and the hormone system. Energetic imbalances in these areas can lead to the 'amniotic fluid' display, regardless of whether you are pregnant.

### **RAH 66.19 Colostrum**

Contains frequency components of the mammary gland, the immune system and the endocrine system. Here too, energetic abnormalities in one of these functional areas can cause the indicator to appear without milk production being present.

---

## IMPORTANT NOTES ON INTERPRETATION:

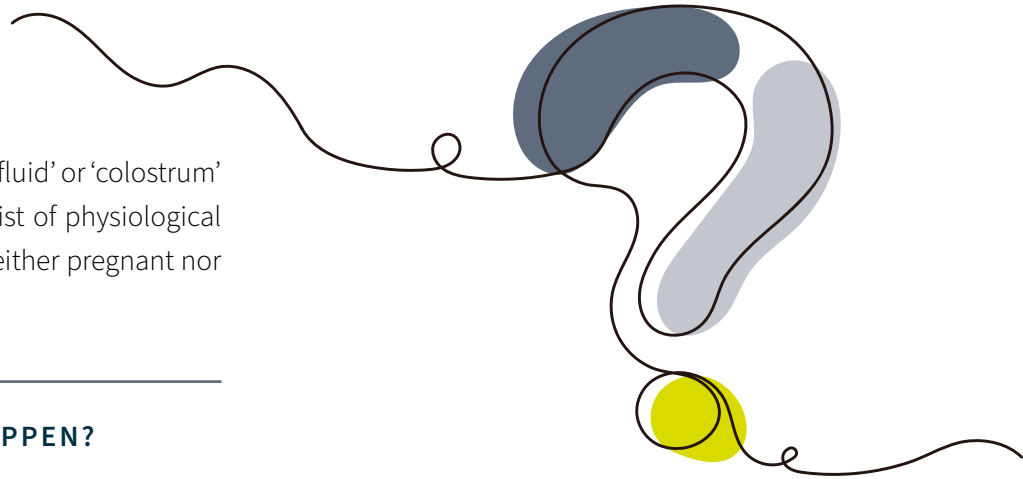
---

The terms displayed are energetic markers, not a direct statement about a current physiological condition. They indicate functional areas associated with the term.

The evaluation should always take into account the related organ systems and the overall picture of the analysis. The priority list is a reference and orientation system, not a diagnosis.

### **Practical tip:**

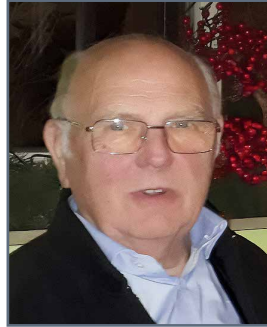
Use the terms displayed as a starting point to take a closer look at the associated organ systems and functional axes. This often allows energetic connections to be identified more quickly and treated in a more targeted manner. (Text: Gudrun Bunkenburg)



# GUSTAV-ADOLF HUSSMANN

A life dedicated to energy work – a personal conversation with the BaPS old hand

Gustav-Adolf Hussmann is a pioneer of frequency medicine in the veterinary field – even though his professional roots lay elsewhere. As a trained businessman and dedicated dowser, he discovered his passion for energetic connections within the organism at an early age. The decisive turning point came when he met Paul Schmidt and gained his first experience with bioresonance according to his principles. What began as a personal fascination quickly developed into a vocation: Today, at the age of 88, Hussmann is retired but continues to use Bioresonance according to Paul Schmidt regularly in his private life. In this interview with Claudia Brill, he talks about his journey, touching healing successes, and his deep conviction that frequency medicine can do more than many people believe.



**Gustav-Adolf Hussmann**  
Animal naturopath, Dortmund

**Claudia Brill: Mr Hussmann, how did you originally discover Bioresonance according to Paul Schmidt?**

**Gustav-Adolf Hussmann:** It is quite simple. I was working as a salesman in a large car tyre company. On the side, I was also working as a dowser and came across the electromagnetic blood test at the Dr Aschoff research group – I was fascinated. I had no experience, but I was very interested, so I got myself a test device and some ampoules. I started testing animals with it. Soon I was called in to test horses at the veterinary clinic in Wormbach. It was there that I met Paul Schmidt in person. At one of the meetings, he pressed a small device into my hand and said, ‘Try this.’

I did many comparative measurements with the electromagnetic blood test and had a large collection of nosodes. This enabled me to determine frequencies very precisely. I began to transfer these frequencies into treatment forms based on information I had received from Paul Schmidt and others in Langenei, where Rayonex was located at the time.

In the 1980s – around 1985 – I registered my homeopathic animal health practice after passing the animal health practitioner exam. I continued to work part-time, especially closely with Klaus Buchholz. He treated; I tested. Our successes brought us to the attention of Dietmar Heimes and Gudrun Bunkenburg. Mr Heimes had clear business acumen and great vision – that inspired me. Together, we published our first information sheet with frequencies for horses and dogs. Cats were added later. Homeopathic remedies were combined with frequency recommendations. I then developed an acupuncture point list for horses and dogs, my own test sets and programs, which were later incorporated into the Rayonex system.

**Claudia Brill: Do you remember which device Paul Schmidt gave you at that time?**

**Gustav-Adolf Hussmann:** Yes, that was a Sanotron. That is how it all started. Later, we had a large device at the veterinary clinic in Wormbach, a predecessor model of the Rayocomp PS 10. It allowed us to work more precisely in certain areas. Paul Schmidt was a

great inspiration – for example, through his work with chakra images. I met him about four or five times. Dietmar Heimes then brought electronics into the game – his area of expertise. This led to the Rayocomp PS 10, which later made mobile use much easier. And with the Rayocomp PS 1000 polar, Rayonex was able to take another huge step forward.

**Claudia Brill: So you have been with our devices right from the start and have accompanied the development of Rayonex products from the very beginning. How have you experienced the technical development at Rayonex?**

**Gustav-Adolf Hussmann:** As CEO, Dietmar Heimes is not only a source of ideas and a leading figure within the company, but also in Bioresonance according to Paul Schmidt in general, and that is what impresses me about Dietmar Heimes: His innovative strength! He consistently drives new ideas forward. The Rayocomp PS 1000 polar 4.0 and the new Rayocomp PS 10 plus with the Extension Kit are technological masterpieces. These devices offer possibilities that no other company in the field of bioresonance can provide.

**Claudia Brill: Although you were always happy with your existing devices, you never closed your mind to new innovations. What motivated you to keep up with technological progress?**

**Gustav-Adolf Hussmann:** On the one hand, the devices themselves – their quality makes our work more precise and efficient. On the other hand, Bioresonance according to Paul Schmidt enables us to compensate for limitations in medicine and we have already achieved enormous progress in this area. However, it is not that we lack medication or are no longer allowed to do certain things – but with frequency medicine, we can perform diagnostics at the highest level. Especially in cases of internal diseases or nervous systems damaged by environmental toxins, we are often superior to veterinarians who work without such devices.

**Claudia Brill: Was there a particular key experience you had with Rayonex or Bioresonance according to Paul Schmidt?**

**Gustav-Adolf Hussmann:** A key experience was definitely a case involving a horse that was becoming increasingly ill and for which conventional medicine was unfortunately unable to help. We then found some relevant frequencies that needed harmonisation and were able to help the animal get back on its feet relatively quickly. Mrs Bunkenburg has also reported on this in more detail in her book ‘Bioresonance according to Paul Schmidt in the veterinary field’. That was an ‘aha’ moment: If you work conscientiously with the Paul Schmidt frequencies, you will be successful. I have never experienced this with other devices.

**Claudia Brill: So what, in your opinion, constitutes the correct application of Bioresonance according to Paul Schmidt?**

**Gustav-Adolf Hussmann:** You have to be willing to go deeper. It is not enough to simply take a fundamental frequency value such as 54,00 – it can have an effect in other contexts that we do not yet fully understand. Even if a fundamental frequency value has not yet been evaluated, this does not mean that it is unimportant. If it appears in the test, it is relevant – this applies to humans and animals alike.

**Claudia Brill: What advice would you give to someone who is new to Bioresonance according to Paul Schmidt?**

**Gustav-Adolf Hussmann:** Quite clearly: Familiarise yourself thoroughly with the system. Do not be blinded by promises of quick success. You have to develop a feel for the frequencies – and also be patient. It is like playing a music instrument: you cannot give a concert straight away. But if you practise regularly and keep an open mind, incredible possibilities will open up. I think that is what is so fascinating about this system, especially in the veterinary field, because animals cannot

communicate their symptoms to us to the same extent as humans. I also find acupuncture very interesting. If, for example, you place the detector on a horse in a specific place, such as the edge of the hoof, you can use Bioresonance according to Paul Schmidt to apply specific frequencies. Without any needles at all. Who likes getting pricked?

Many acupuncturists place needles roughly in the area, but the points are often only two centimetres apart. If we test the frequencies correctly, we can open acupuncture points in a targeted manner using a plus-minus effect – painlessly and effectively. The animal shows a change in behaviour very quickly, especially horses and dogs.

**Claudia Brill: Do you use Bioresonance according to Paul Schmidt privately as well as in the veterinary field?**

**Gustav-Adolf Hussmann:** Of course. Here is an example: My wife collapsed during the coronavirus pandemic and was in a coma for twelve days. She did not wake up. I then worked with bioresonance frequencies – and she woke up. But then the much bigger task began: Rebuilding her health. She received treatment at home with the Rayocomp PS 10, adjusted daily using a special test. At the same time, a Rayonator was running with her frequency information. Today, she is walking with a rollator. She is stable and only takes one medication for her heart. We do a check every two weeks to readjust the settings. I say: You cannot do better than that.

**Claudia Brill: That is a really wonderful success story. We are delighted that your wife is feeling better.**

**Gustav-Adolf Hussmann:** Yes. No one believed it would work. Even in short-term care, they did not expect any improvement, but rather the worst. However, I was certain that we could achieve something with the help of Bioresonance according to Paul Schmidt.

**Claudia Brill: That shows how positively you think. Do you think that also has an influence on working with Bioresonance according to Paul Schmidt?**

**Gustav-Adolf Hussmann:** Yes, of course, a positive attitude affects everything in life. And here I have a firm belief in the effectiveness of this method because it works with natural frequencies. To be honest, I do not care what the scientific term for it is, even though there are now numerous impressive studies on the subject – what matters to me is that the device works and helps me. I have done lots of tests, whether with remedies or allergies, and I feel that my body reacts positively to it.

**Claudia Brill: What would you wish for the future of Bioresonance according to Paul Schmidt?**

**Gustav-Adolf Hussmann:** I would like to see the method become scientifically recognised – even if health insurance companies do not yet cover the costs. That would be a big step forward for everyone who supports it. And I hope that it continues to be as positive and innovative as it has been so far.

**Claudia Brill: What would you tell someone who is encountering Bioresonance according to Paul Schmidt for the first time?**

**Gustav-Adolf Hussmann:** I show them real testimonials – including some from animals. Animals cannot simulate whether something works or not. I also tell them that if it did not work, no one would pay for it. And we have many clients who have achieved incredible results over decades with a combination of conventional medicine and bioresonance, or with Bioresonance according to Paul Schmidt alone. That is convincing.

**Claudia Brill: I could not agree more. Thank you very much, Mr Hussmann, for talking to us!**

**Gustav-Adolf Hussmann:** My pleasure! It is important to me that this method becomes more widely used.

(Text: Claudia Brill | Gustav-Adolf Hussmann)

# HANGOVER? ENERGETIC BALANCE AND GENTLE DETOXIFICATION

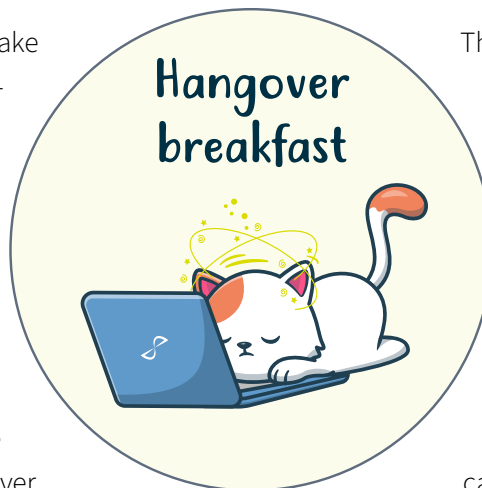
## My personal tip

If you had a lively evening and wake up the next morning with a headache, nausea or general fatigue, this is a sign that your body is dealing with the effects of alcohol consumption. In medical support, people ask for gentle support through frequency therapy, and yes, it can be used effectively to energetically activate physiological processes such as liver function, metabolism and kidney activity.

But honestly, what really helps the body is the targeted supply of minerals and bases – and this is exactly where I wholeheartedly recommend Rayobase®.

After consuming alcohol, our body often becomes unbalanced: The liver is overwhelmed with breaking down toxins, especially acetaldehyde. At the same time, the body loses important electrolytes and water due to the diuretic effect of alcohol, which can lead to dehydration, circulatory problems and headaches. Blood sugar levels also fluctuate, which explains the tremors, irritability and ravenous appetite the next day. Last but not least, our nervous system is under stress, sleep is less restful and our mood is depressed.

Rayobase® targets precisely where the body needs support most: It supplies it with alkaline minerals that help to balance the acidification caused by alcohol.



This relieves the metabolism and allows the enzymes involved in alcohol breakdown to work more efficiently again. Particularly important here are magnesium and zinc, which are involved in the conversion of ethanol into acetaldehyde and then into acetic acid. Potassium and calcium also stabilise the fluid balance, calm the nervous system and support cell functions. I recommend drinking Ray-

obase® before going to bed, dissolved in a glass of lukewarm water. This gives the body a good base for regeneration overnight. To further support detoxification, drink another glass the next morning. If necessary, you can repeat this in the evening of the same day.

Of course, frequency therapy can also be useful for harmonising the energetic system – for example, to stimulate the liver, kidneys, metabolism or to relieve the nervous system. However, without an adequate supply of minerals, the effect is often limited. Therefore, my advice is: Rayobase® first – frequency therapy as an accompaniment.

This way, the day after the party starts easier, with more energy, more clarity and significantly less hangover! (Text: Gudrun Bunkenburg)



## Program recommendation

### from RAH Human:

- 00.00 Analysis preparation
- 01.00 Vitalisation complete
- 02.00 Acupuncture meridians complete
- 31.10 ATP production complete
- 44.00 Kidney / urinary organs, physiology complete
- 48.10 Liver complete
- 50.00 Metabolism, physiology complete
- 54.00 Nervous system, physiology complete
- 31.50 Detoxification, basic program
- 31.53 Detoxification acidosis
- 31.60 Detoxification liver
- 31.61 Detoxification intestines
- 31.62 Detoxification kidney
- 31.66 Detoxification endotoxins
- 01.00 Vitalisation complete



### Keep a clear head – at all times!

After all these tips on alcohol compensation and the support provided by our systems, one thing is essential: a little tongue-in-cheek conclusion. Because we at Rayonex Biomedical know from our own experience – sometimes the evening just goes on a little later, the glass is not quite empty, and the next morning ... well, you know how it is.

That is why we are raising a symbolic glass with you! Not just to you, our loyal readers, but to smart decisions the morning after. With Rayobase® in your glass instead of your next drink: for a good mood, clear thoughts and a dose of loving self-care.

With this in mind: Cheers – to a strong system, inner balance and a fresh start to the day!



The picture  
was sent in by:

**Elisabeth Hirning**

Thank you  
very much!

## A WILD SUCCESS

Do you use Bioresonance according to Paul Schmidt on your pet?  
If so, send us your best application photo!

We know from many years of experience that Bioresonance according to Paul Schmidt is not only used very successfully in the human field, but also in the veterinary field by vets, vet practitioners and pet owners. If you also use Bioresonance according to Paul Schmidt on your animal, please send us your pictures to **support@rayonex.de!** We always publish the best photos in Rayonex feedback. We also look forward to re-

ceiving your case reports on Bioresonance according to Paul Schmidt. By submitting your entry, you agree to the publication of the submitted material (photos, case report) and your name in the Rayonex feedback, other media and publications of Rayonex Biomedical. Only use images and text material you have created yourself. Please also note that any persons depicted must agree to the publication.

LOOK FORWARD TO  
THE NEXT ISSUE OF THE

RAYONEX  
**feedback**



---

Editorial

**The use of Bioresonance according to Paul Schmidt in different regions of the world**

Rayonex innovative

**Rayometer – Review and preview**

Education

**News about the naturopathic school**

Human medicine

**Energetic support for postoperative nausea with Bioresonance according to Paul Schmidt**

Veterinary medicine

**A further case study**

(subject to change)

---

## IMPRINT

### Editor and publisher:

Rayonex® Foundation  
Sauerland-Pyramiden 1  
57368 Lennestadt | Germany  
Phone: +49 2721 6006-70  
info@rayonex-foundation.de  
www.rayonex-foundation.de

### Editorial address:

redaktion@rayonex-foundation.de  
Phone: +49 2721 6006-70

### Responsible for the content:

Dietmar Heimes

### Editorial team:

Gudrun Bunkenburg (International Medical Support), Jana Düperthal (Graphics), Claudia Brill (Content Management)

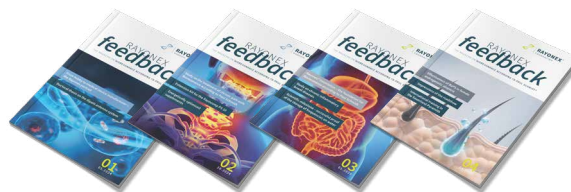
### Picture credits:

istockphoto.com (p. 5 cnythzl | p. 8 Belitas | p. 20 yoh4nn | p. 22 Caramel | p. 28 Bi- enchen-s) | p. 28 Association for Integrative Veterinary Medicine | Other images + vectors: Freepik, Envato, Adobe Firefly

### Print:

WIRmachenDRUCK GmbH (printing on recycled paper, Blue Angel, FSC)

*Missed this issue?*



You can download all issues at  
[www.rayonex-biomedical.de/downloads/](http://www.rayonex-biomedical.de/downloads/)

**RAYONEX<sup>®</sup> FOUNDATION**

Sauerland-Pyramiden 1  
57368 Lennestadt  
Germany

Telefon +49 2721 6006-70  
[info@rayonex-foundation.de](mailto:info@rayonex-foundation.de)  
[www.rayonex-foundation.de](http://www.rayonex-foundation.de)

SCIENCES OF HEALTH